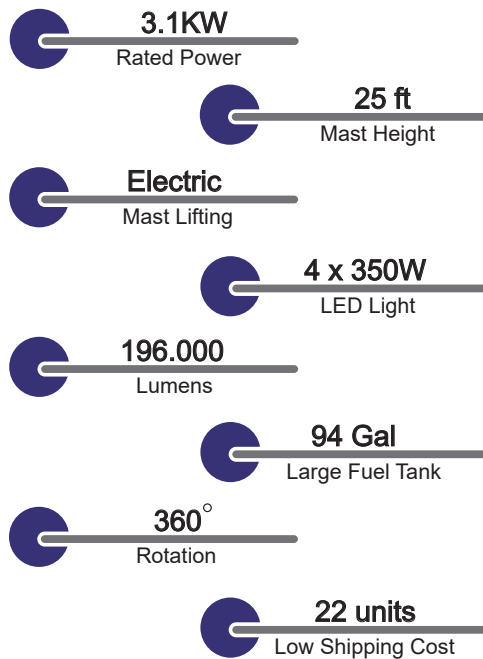


# V2 PLUS LIGHT TOWER

# ULTRAQUIP



## Features

- >> Powered by Kubota engine with reliable power output
- >> With forklift pockets and lift point for transportation
- >> Easy accesses for maintenance and control
- >> 5 stabilizers, four of which are extendible to guarantee stability
- >> Draw bar with ball coupling
- >> Suitable for all weather conditions.

## Application

- >> Mining site
- >> Construction
- >> Utilities
- >> Special events
- >> Military
- >> Airport and seaport
- >> Emergency lighting solution

## General Spec

Model	V2 PLUS
Rated Frequency	60HZ/1800rpm
Rated Voltage	1P,120V
Rated Power	3.1KW
Min.working Temperature	-13°F
Max.working Temperature	155°F
Noise Level	71dBA@23ft
Fuel Tank Capacity	355L (94Gal)
Tank refilling	External
Dimensions(Unfolded)	295H 95W 113.5L in Open
Dimensions(folded)	117H 61W 113.5L in Folded
Sockets	1x20A

# V2 PLUS LIGHT TOWER

# ULTRAQUIP

## Specifications

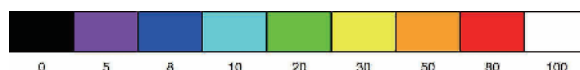
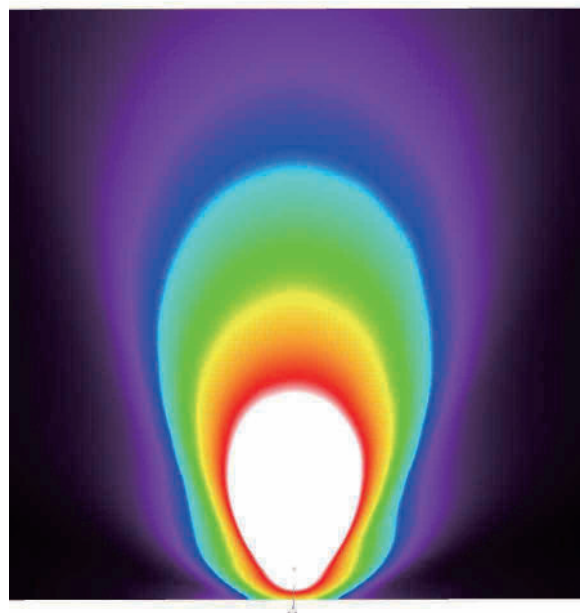
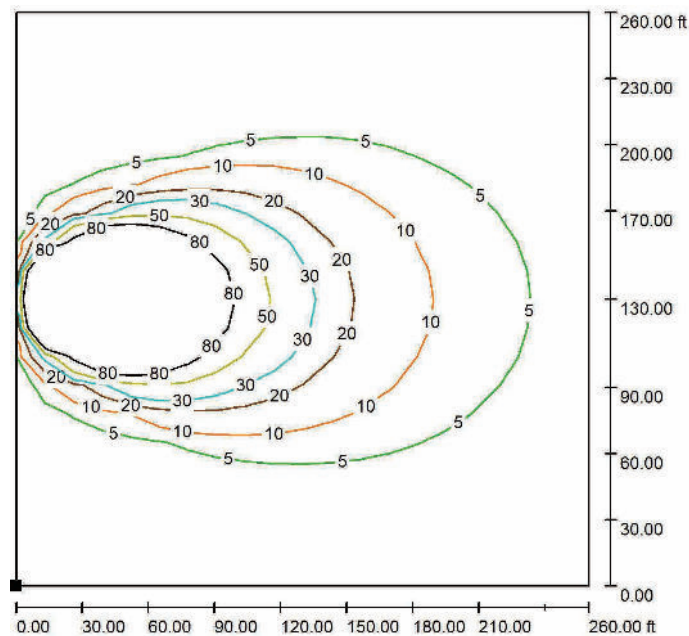
<b>Model</b>	<b>V2 PLUS</b>
Fuel Consumption@4 lamps on	0.20gph
Dry Weight	1720Lbs
<b>Engine</b>	
Brand	Kubota
Model	Z482-E4
Engine Type	4-stroke diesel
Number of Cylinders	2
Bore and Stroke mm (in)	67x68 (2.64x2.68)
Displacement L (cu.in)	0.479 (29.23)
Speed	1800rpm
Continuous Output	3.8KW
Injection Type	Indirect
Aspiration Type	Natural
Oil Pan Capacity (Max)	3.8L / 1.0Gal
Cooling System (with Radiator)	3.5L / 0.92Gal
Speed Governor	Mechanical
Starter Capacity (V-kW)	12-0.8
Alternator Capacity (V-A)	12-12.5
<b>Alternator</b>	
Brand	HarbinGer
Model	HA3.1
Rated Volts / Phase	120V, 1P
Rated Frequency	60HZ
Continuous Output	3.1KW
Exciting Type	Capacitor
Regulation Type	Self-Regulation
Insulation Class	Class F
Power Factor	1
Environment Protection	IP21
<b>Lights</b>	
Lamps	LED Light
Wattage	4x350W
Total Lumens	196,000
<b>Mast</b>	
Type	Electric
Mast sections	5
Rotation	360°
Max Height	25ft
Wind proof	60 mile/h
<b>Chassis</b>	
Wheels	2 x ST175/80D13
Stabilisers	5
Signalling lamps	Tail Light

# V2 PLUS LIGHT TOWER

# ULTRAQUIP

## Light Range

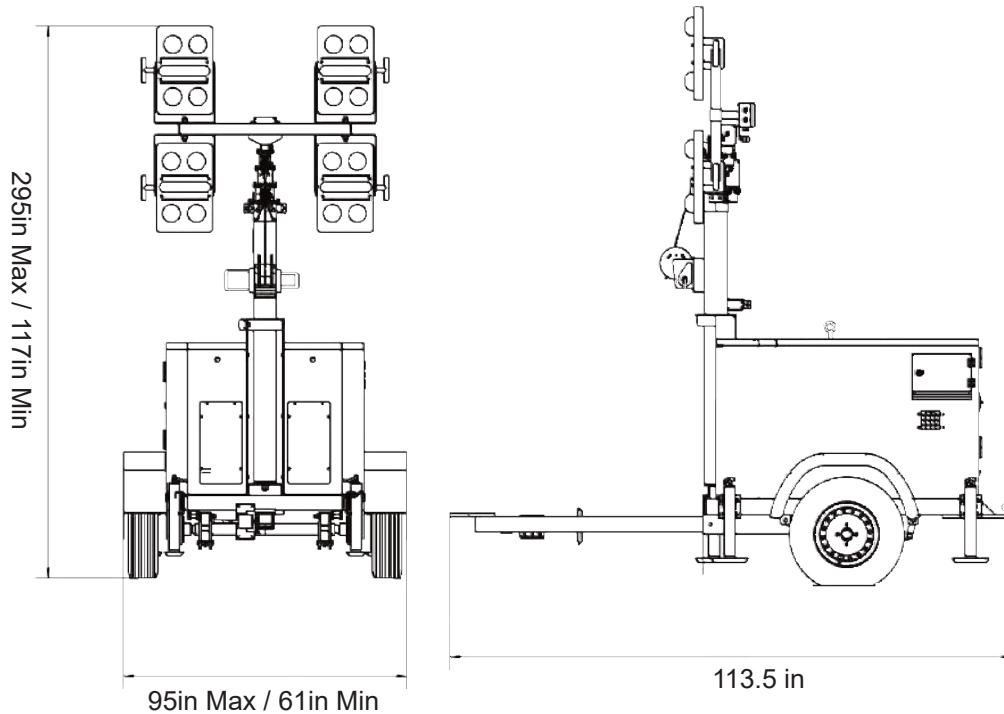
- >> Light: 4x350W
- >> Lighting Area: 28374ft<sup>2</sup>@5lx
- >> Total Acreage: 260ft x 260ft
- >> Luminosity: 20 lx average in the whole area 93097ft<sup>2</sup>



# V2 PLUS LIGHT TOWER

# ULTRAQUIP

## Dimensions



### Working Mode

Dimensions(Unfolded): 7500H 2420W 2883L mm  
Dimensions(Unfolded): 295H 95W 113.5L in

### Transport Mode

Dimensions(Folded): 2962H 1540W 2883L mm  
Dimensions(Folded): 117H 61W 113.5L in