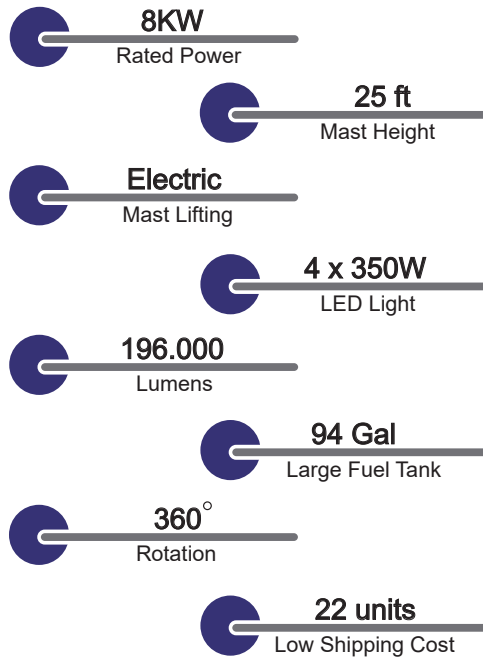


V3 PLUS LIGHT TOWER

ULTRAQUIP



Features

- >> Powered by Kubota/Perkins/Yanmar engine with reliable power output
- >> With forklift pockets and lift point for transportation
- >> Easy accesses for maintenance and control
- >> 5 stabilizers, four of which are extensible to guarantee stability
- >> Draw bar with ball coupling
- >> Suitable for all weather conditions.

Application

- >> Mining site
- >> Construction
- >> Utilities
- >> Special events
- >> Military
- >> Airport and seaport
- >> Emergency lighting solution

General Spec

Model	V3 PLUS
Rated Frequency	60HZ/1800rpm
Rated Voltage	1P, 120V
Rated Power	8KW
Min.working Temperature	-13°F
Max.working Temperature	155°F
Noise Level	71dBA@23ft
Fuel Tank Capacity	355L (94Gal)
Tank refilling	External
Dimensions(Unfolded)	295H 95W 113.5L in Open
Dimensions(folded)	117H 61W 113.5L in
Sockets	2x20A, 1x30A

V3 PLUS LIGHT TOWER

ULTRAQUIP

Specifications

Model	V3 PLUS	V3 PLUS	V3 PLUS
Fuel Consumption@4 lamps on	0.20gph	0.20gph	0.20gph
Dry Weight	1855Lbs	1940Lbs	1940Lbs
Engine			
Brand	Kubota	Perkins	Yanmar
Model	D1105-BG	403F-11	3TNV80F-NGGE
Engine Type	4-stroke diesel	4-stroke diesel	4-stroke diesel
Number of Cylinders	3	3	3
Bore and Stroke mm (in)	78.0x78.4 (3.07x3.09)	77x81 (3.03x3.19)	80x84 (3.15x3.31)
Displacement L (cu.in)	1.123 (68.53)	1.131 (69.01)	1.266 (77.3)
Speed	1800rpm	1800rpm	1800rpm
Continuous Output	10.1KW	10.3KW	11KW
Injection Type	Indirect	Indirect	Indirect
Aspiration Type	Natural	Natural	Natural
Oil Pan Capacity (Max)	5.1L / 1.35Gal	4.4L / 1.16Gal	3.5L / 0.92Gal
Oil Pan Capacity (Effective)	3.5L / 0.93Gal	3.4L / 0.90Gal	1.6L / 0.42Gal
Cooling System (with Radiator)	3.9L / 1.03Gal	5.2L / 1.37Gal	4.1L / 1.08Gal
Speed Governor	Mechanical	Mechanical	Mechanical
Starter Capacity (V-kW)	12-1.0	12-1.1	12-1.1
Alternator Capacity (V-A)	12-30	12-15	12-40
Alternator			
Brand		Althon	
Model		AG164T16	
Rated Volts / Phase		120V, 1P	
Rated Frequency		60HZ	
Continuous Output		8KW	
Exciting Type		Capacitor	
Regulation Type		Self-Regulation	
Insulation Class		Class H	
Power Factor		1	
Environment Protection		IP22	
Lights			
Lamps		LED Light	
Wattage		4x350W	
Total Lumens		196,000	
Mast			
Type		Electric	
Mast sections		5	
Rotation		360°	
Max Height		25 ft	
Wind proof		60 mile/h	
Chassis			
Wheels		2 x ST175/80D13	
Stabilisers		5	
Signalling lamps		Tail Light	

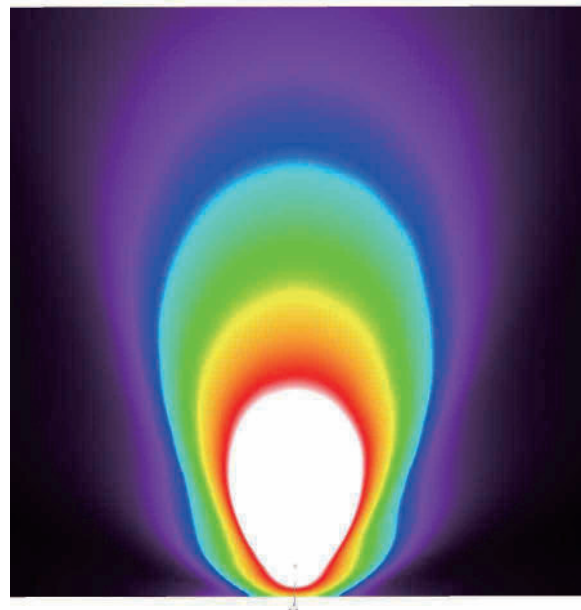
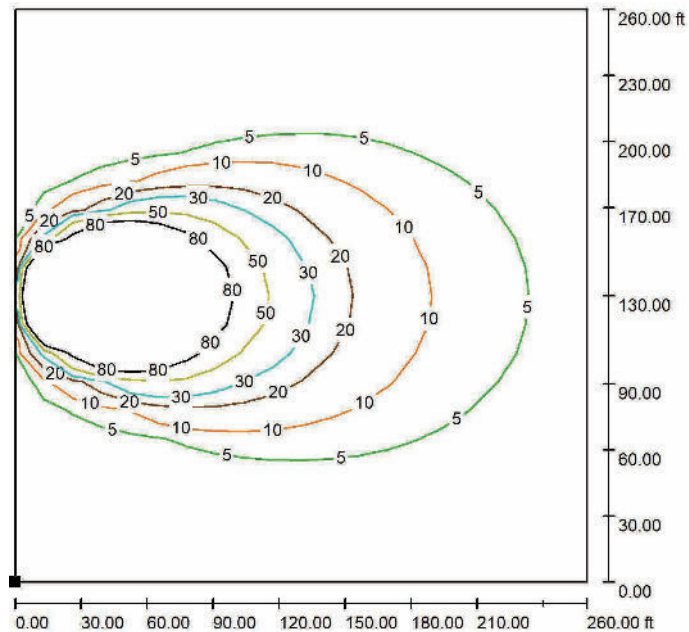
V3 PLUS

LIGHT TOWER

ULTRAQUIP

Light Range

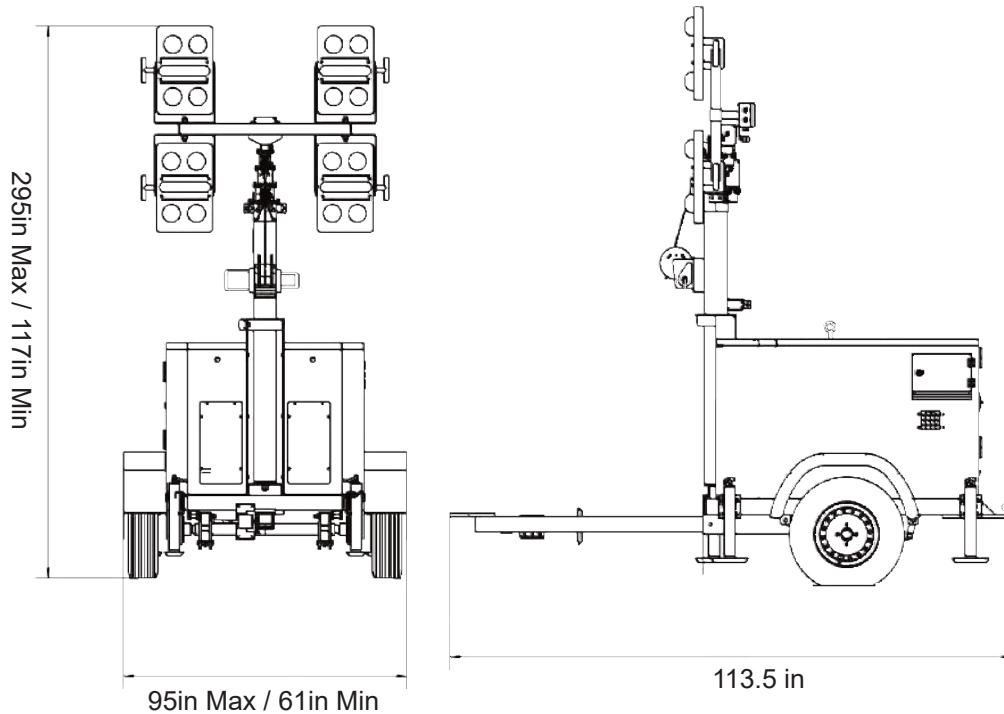
- >> Light: 4x350W
- >> Lighting Area: 28374ft²@5lx
- >> Total Acreage: 260ft x 260ft
- >> Luminosity: 20 lx average in the whole area 93097ft²



V3 PLUS LIGHT TOWER

ULTRAQUIP

Dimensions



Working Mode

Dimensions(Unfolded): 7500H 2420W 2883L mm
Dimensions(Unfolded): 295H 95W 113.5L in

Transport Mode

Dimensions(Folded): 2962H 1540W 2883L mm
Dimensions(Folded): 117H 61W 113.5L in