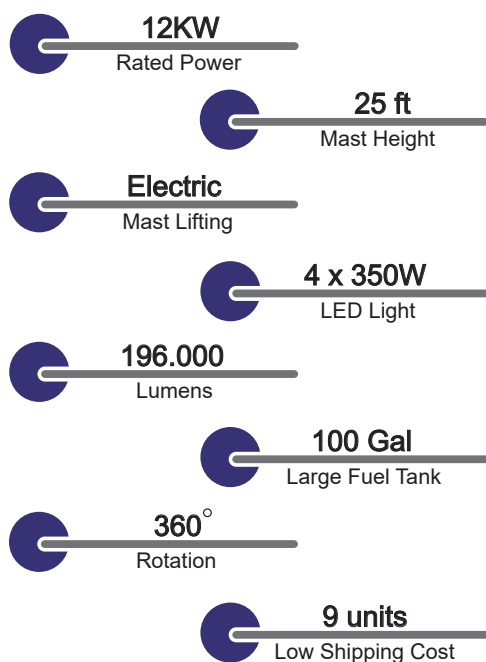


# UQ12E-LED LIGHT TOWER

# ULTRAQUIP



## Features

- >> Powered by Kubota engine with reliable power output
- >> With forklift pockets and lift point for transportation
- >> Easy accesses for maintenance and control
- >> 5 stabilizers, four of which are extensible to guarantee stability
- >> Draw bar with ball coupling
- >> Suitable for all weather conditions.

## Application

- >> Mining site
- >> Construction
- >> Utilities
- >> Special events
- >> Military
- >> Airport and seaport
- >> Emergency lighting solution

## General Spec

Model	UQ12E-LED
Rated Frequency	60HZ/1800rpm
Rated Voltage	1P,120V or 1P, 240V
Rated Power	20KW
Min.working Temperature	-13°F
Max.working Temperature	122 °F
Noise Level	71dBA@23ft
Fuel Tank Capacity	100Gal
Tank refilling	Internal
Dimensions(Unfolded)	295H 114W 124L in Open
Dimensions(folded)	113.7H 74.4W 124L in
Sockets	2x20A, 2x30A

UQ12E-LED

# LIGHT TOWER

ULTRAQUIP

## Specifications

<b>Model</b>	<b>UQ12E-LED</b>
Fuel Consumption@4 lamps on	0.25gph
Dry Weight	2670Lbs
<b>Engine</b>	
Brand	Kubota
Model	V1505-BG
Engine Type	4-stroke diesel
Number of Cylinders	4
Bore and Stroke mm (in)	78x78.4 (3.07x3.09)
Displacement L (cu.in)	1.498 (91.40)
Speed	1800rpm
Continuous Output	16.2KW
Injection Type	Indirect
Aspiration Type	Natural
Oil Pan Capacity (Max)	6.7L / 1.77Gal
Cooling System (with Radiator)	8.5L / 2.25Gal
Speed Governor	Mechanical
Starter Capacity (V-kW)	12-1.2
Alternator Capacity (V-A)	12-30
<b>Alternator</b>	
Brand	Athlon
Model	DA-12D
Rated Volts / Phase	120V, 1P
Rated Frequency	60HZ
Continuous Output	12KW
Exciting Type	AVR
Voltage Regulation	±1%
Insulation Class	Class H
Power Factor	1
Environment Protection	IP23
<b>Lights</b>	
Lamps	LED Light
Wattage	4x350W
Total Lumens	196,000
<b>Mast</b>	
Type	Electric
Mast sections	5
Rotation	360°
Max Height	25ft
Wind proof	60mile/h
<b>Chassis</b>	
Wheels	2 x ST225/75R15
Stabilisers	5
Signalling lamps	Tail Light

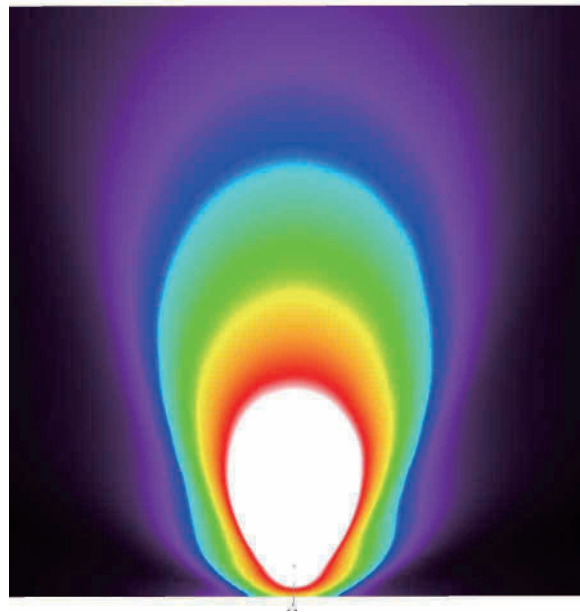
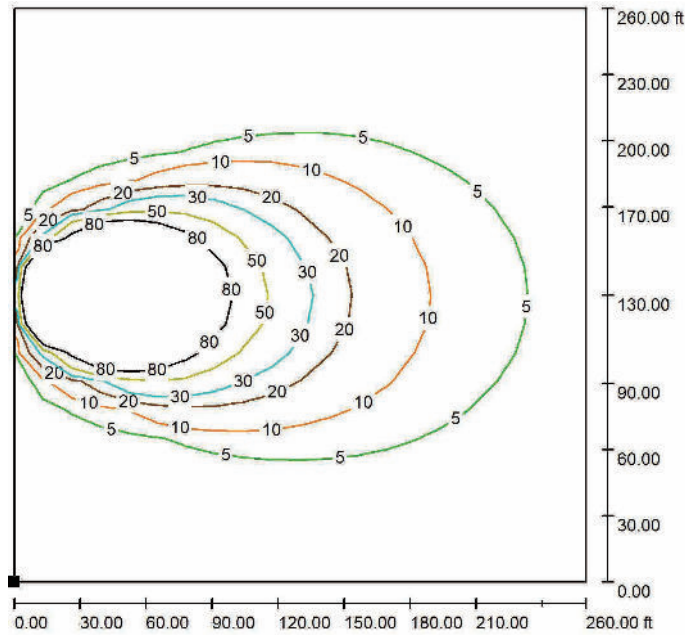
UQ12E-LED

# LIGHT TOWER

ULTRAQUIP

## Light Range

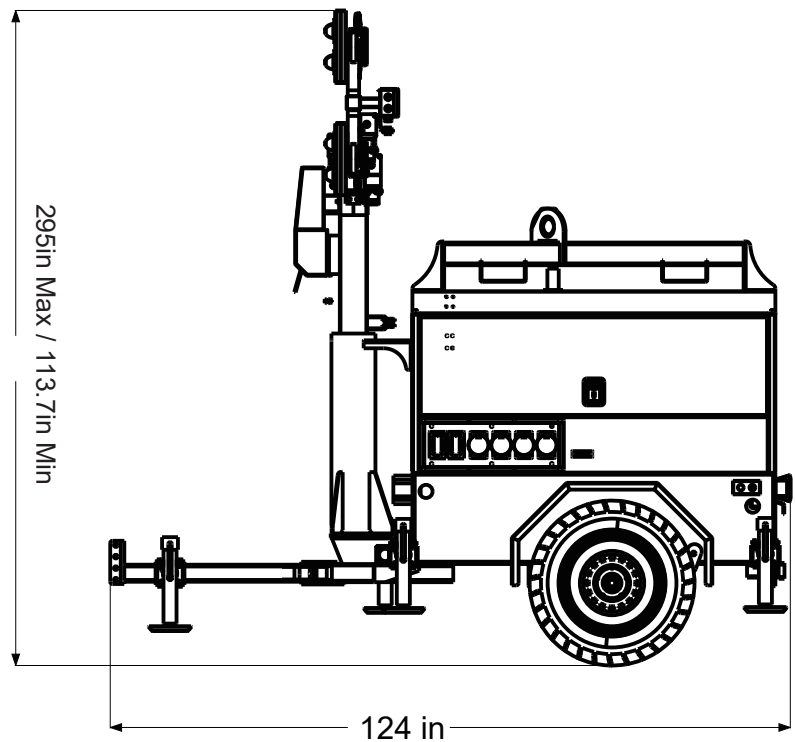
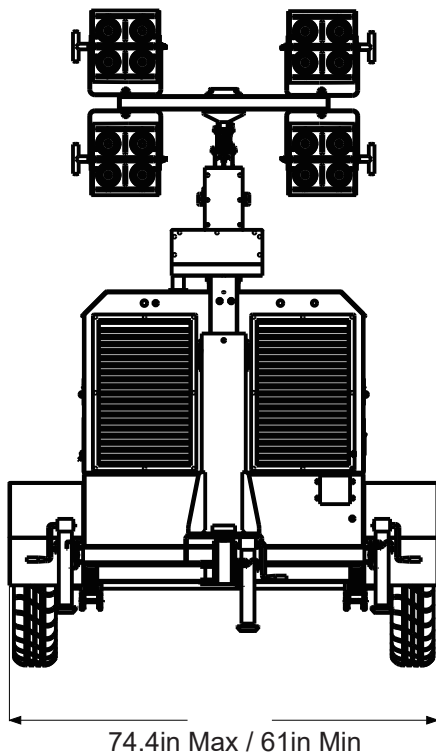
- >> Light: 4x350W
- >> Lighting Area: 28374ft<sup>2</sup>@5lx
- >> Total Acreage: 260ft x 260ft
- >> Luminosity: 20 lx average in the whole area 93097ft<sup>2</sup>



# UQ12E-LED LIGHT TOWER

# ULTRAQUIP

## Dimensions



### Working Mode

Dimensions(Unfolded): 295H 114W 124L in

### Transport Mode

Dimensions(Folded): 113.7H 74.4W 124L in