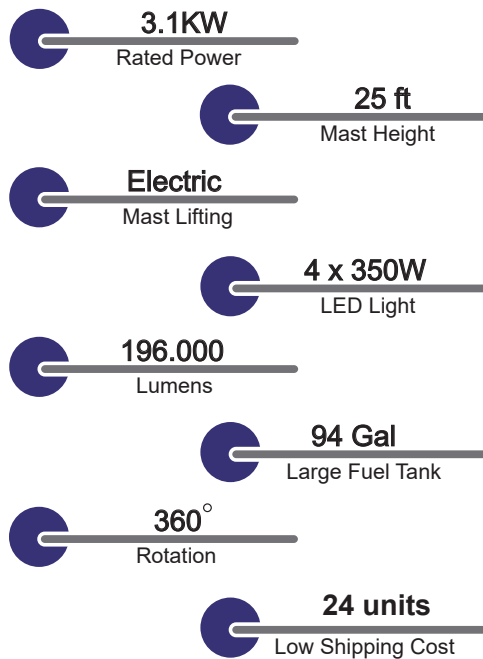


V2 PLUS LIGHT TOWER

ULTRAQUIP



Features

- >> Powered by Kubota engine with reliable power output
- >> With forklift pockets and lift point for transportation
- >> Easy accesses for maintenance and control
- >> 4 stabilizers, four of which are extensible to guarantee stability
- >> Suitable for all weather conditions.

Application

- >> Mining site
- >> Construction
- >> Utilities
- >> Special events
- >> Military
- >> Airport and seaport
- >> Emergency lighting solution

General Spec

Model	V2 PLUS
Rated Frequency	60HZ/1800rpm
Rated Voltage	1P,120V
Rated Power	3.1KW
Min.working Temperature	-13°F
Max.working Temperature	155°F
Noise Level	71dBA@23ft
Fuel Tank Capacity	355L (94Gal)
Tank refilling	External
Dimensions(Unfolded)	295H 78.5W 65.6L in Open
Dimensions(folded)	106.9H 50.8W 65.6L in Folded
Sockets	1x20A

V2 PLUS LIGHT TOWER

ULTRAQUIP

Specifications

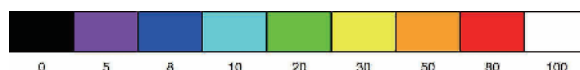
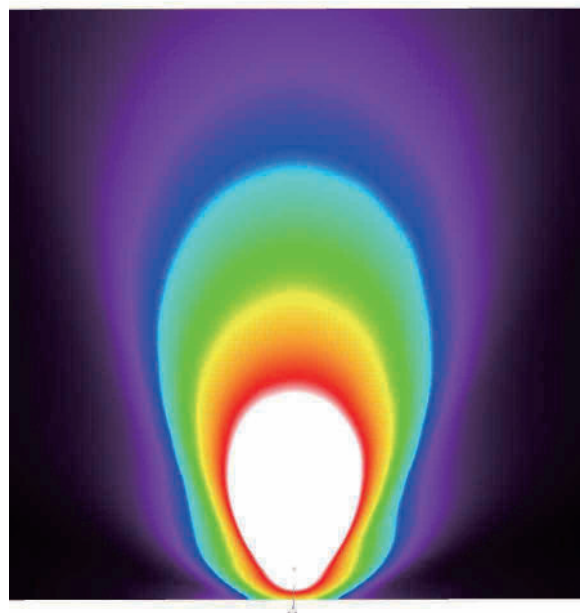
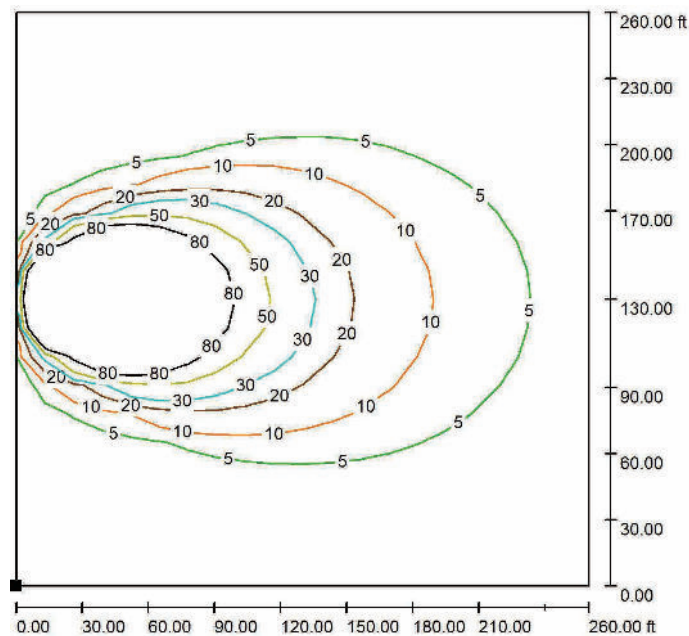
Model	V2 PLUS
Fuel Consumption@4 lamps on	0.20gph
Dry Weight	1720Lbs
Engine	
Brand	Kubota
Model	Z482-E4
Engine Type	4-stroke diesel
Number of Cylinders	2
Bore and Stroke mm (in)	67x68 (2.64x2.68)
Displacement L (cu.in)	0.479 (29.23)
Speed	1800rpm
Continuous Output	3.8KW
Injection Type	Indirect
Aspiration Type	Natural
Oil Pan Capacity (Max)	3.8L / 1.0Gal
Cooling System (with Radiator)	3.5L / 0.92Gal
Speed Governor	Mechanical
Starter Capacity (V-kW)	12-0.8
Alternator Capacity (V-A)	12-12.5
Alternator	
Brand	HarbinGer
Model	HA3.1
Rated Volts / Phase	120V, 1P
Rated Frequency	60HZ
Continuous Output	3.1KW
Exciting Type	Capacitor
Regulation Type	Self-Regulation
Insulation Class	Class F
Power Factor	1
Environment Protection	IP21
Lights	
Lamps	LED Light
Wattage	4x350W
Total Lumens	196,000
Mast	
Type	Electric
Mast sections	5
Rotation	360°
Max Height	25ft
Wind proof	60 mile/h
Chassis	
Wheels	N/A
Stabilisers	4
Signalling lamps	Tail Light

V2 PLUS LIGHT TOWER

ULTRAQUIP

Light Range

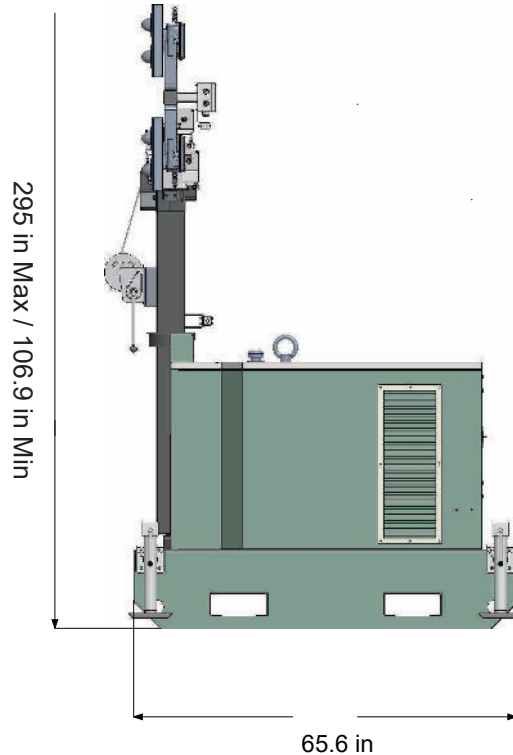
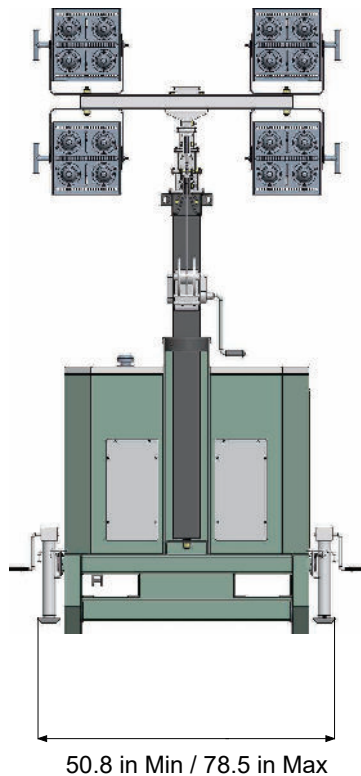
- >> Light: 4x350W
- >> Lighting Area: 28374ft²@5lx
- >> Total Acreage: 260ft x 260ft
- >> Luminosity: 20 lx average in the whole area 93097ft²



V2 PLUS LIGHT TOWER

ULTRAQUIP

Dimensions



Working Mode

Dimensions(Unfolded): 295H 78.5W 65.6L in

Transport Mode

Dimensions(Folded): 106.9H 50.8W 65.6L in